

hupRF Panoramic Adaptor Installation – FT991

These notes are provided to assist with installation of the PAT in a Yaesu FT991 transceiver. The information given here is given in good faith, and has been extracted from the Yaesu FT991 Service Manual, and discussed with FT991 owners. Please note that hupRF has not had the chance to get inside a 991 yet!

The FT991 is different to it's predecessors, (817/857/897) in that although it uses a common first IF, it uses separate mixers for HF and VHF/UHF functions. Thus the IF tap function is easy to install, but 2nd Rx functions would require separate PAT's for HF and the other bands.

The PAT input connection and the power are both picked up from the Main board within the rig. Fig 1 below identifies the two connections, at the drain of Q1122 for the PAT input and at the end of R1734 for the switched R9V rail for the PAT Vcc.

It is difficult to see from the views in the Service Manual, but it is likely that the PAT can be mounted on top of CF1002 and CF1001, using double sided adhesive tape. If this is not possible, then it should be located as close as possible to Q1122. The input connection to Q1122 should be made with a fine single wire, not coax.

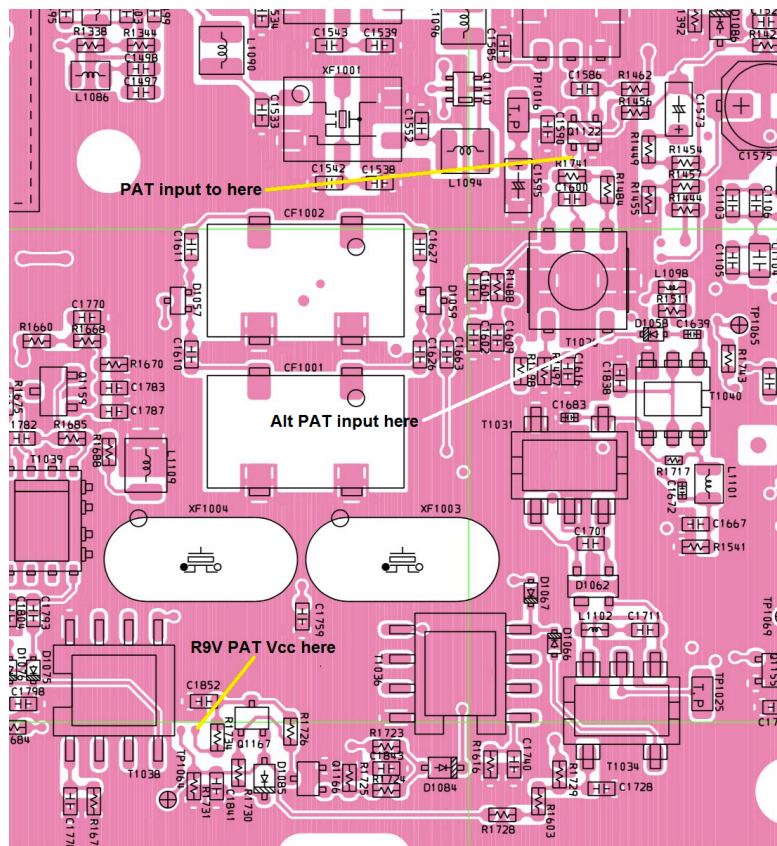


Fig 1 – PAT connections to FT991 Main Board

